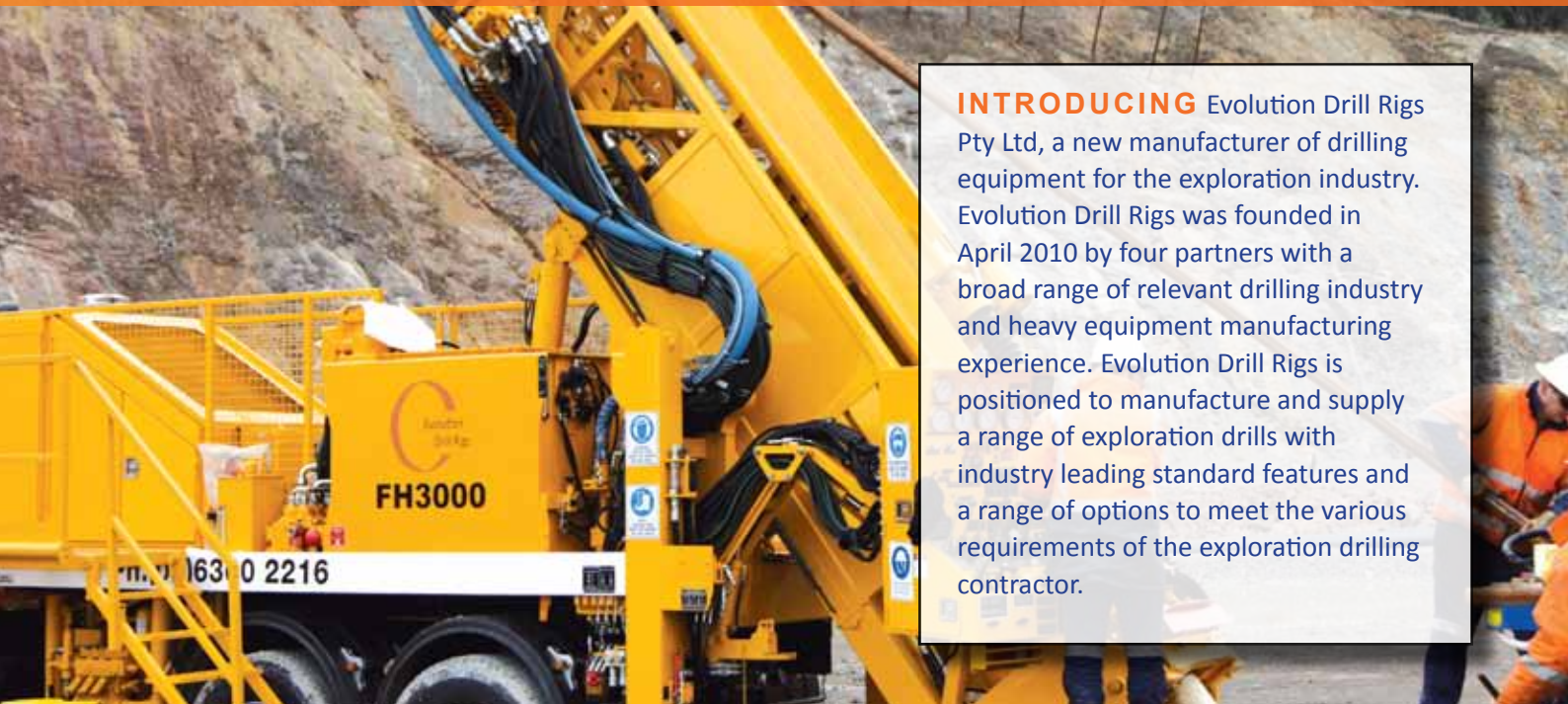




FH3000 DRILL

BY EVOLUTION DRILL RIGS



INTRODUCING Evolution Drill Rigs Pty Ltd, a new manufacturer of drilling equipment for the exploration industry. Evolution Drill Rigs was founded in April 2010 by four partners with a broad range of relevant drilling industry and heavy equipment manufacturing experience. Evolution Drill Rigs is positioned to manufacture and supply a range of exploration drills with industry leading standard features and a range of options to meet the various requirements of the exploration drilling contractor.

FH3000 SPECIFICATIONS

DEPTH CAPACITY

- NQ Core 2950 meters
- HQ Core 2000 meters
- Open hole 3 1/2" rods: 900 meters
- RC 4 1/2": 600 meters (nominal)

ENGINE

- Cummins QSL Electronic
- 255kW (342Hp) @ 1800Rpm

PULL BACK

- 280kN (62900 lb/f) Limited Speed
- 244.8kN (55033 lb/f) Full Speed

PULLDOWN

- 115 kN (25853 lb/f)

TRAVERSE SPEED:

- 55.5 m/min (182 ft/min) maximum speed

ROTATION HEAD

- Top Head Drive
- 14,324 Nm (10564 ft/lbf) in low gear
- 0 - 1500 Rpm speed range
- 100% Theoretical

MAIN WINCH

- 226kN (50806 lb/f) maximum pull
- 100 M/min (328 ft/min) maximum speed
- 2 x Multi disc brake units, fail safe spring activated, hydraulic pressure release.
- 9 meter rod pull capacity

WIRELINE WINCH

- 27 kN (6069 lb/f) Maximum pull
- Rope capacity 3000 meters x 8mm
- 450 meters/min Maximum Speed

WATER PUMP

- Standard FMC W1122BCD 140Lpm @1000Psi
- Optional FMC L11-18SC 265 Lpm @ 1800 Psi